



Rogue Valley Chorale

# Rogue Valley Chorale

Founded, Spring 1973

## Organization Handbook

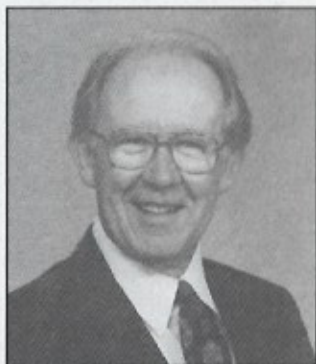
## The Rogue Valley Chorale: A Brief Review

The Rogue Valley Chorale is Southern Oregon's oldest public choral organization. It was founded in 1973 by a group of local musicians who wanted to provide a forum for performing fine choral music. After initial discussions regarding requirements for membership, programming and other considerations, Lynn E. Sjolund, then director of vocal music at Medford Senior High School, agreed to direct the chorus. In order to receive non profit status, Articles of Incorporation were filed with five members serving as the original Directors of the Board. The incorporating members were Mary Kay Harmon, Leslie Hall, Kathy Gordon, Karen Foster, and Judy Cushing. Additional members were added, and the organization wrote by-laws and held auditions. Forty-five singers presented the premier concert of the Rogue Valley Chorale on December 4, 1973. On the program were Bach's *Komm, Jesu Komm* and Respighi's *Laud to the Nativity*.

Since then the group has expanded to approximately eighty voices and includes singers from throughout the Rogue Valley. In the ensuing years, many wonderful concerts have been presented and the Chorale has appeared with the Rogue Valley Symphony and Britt Festival Orchestra on numerous occasions.

### Lynn E. Sjolund

Lynn Sjolund is the founding director of the Chorale and has conducted it during all but three years of its existence. For three years he served as Director of Choral Activities at Loyola University of the South in New Orleans and during that period the Chorale was directed by Russ Otte and Sean Warren. Mr. Sjolund has degrees from the University of Oregon and did advanced study in Germany. He has served as president of the Oregon Music Educators Association and the NW Music Educators Association. In addition to his work with the Chorale he has conducted and produced many operas for Rogue Opera including *La Traviata*, *Tosca*, *Don Pasquale*, *The Barber of Seville* and *Pirates of Penzance*.



## Board of Directors

The Board of Directors, consisting of Chorale members and non singers, manages the operations and business of the Chorale. The Board of Directors arranges rehearsals, publicity, programs, tickets, dress, receptions and other details for each concert. The Board holds periodic social activities such as potlucks, sets up special concerts for community functions, and plans concert tours. The Directors also handle finances, correspondence, and fund-raising.

The Chorale Board of Directors is a working board. All of its various functions are carried out by Board members working individually or with others on committees. There are at least ten and no more than twenty-four directors. The Board meets monthly from September to June, with committee meetings as needed.

Directors or Chorale members also serve in the special appointed roles of librarian, section leader, and assistant director. The librarian catalogues, sorts, and stores all music. Section leaders monitor rehearsal attendance and help with section rehearsals as needed. An Assistant Director, appointed by the Music Director with the Board's approval, rehearses the Chorale and conducts concerts and performances when requested.

### By-Laws

The by-laws of the Rogue Valley Chorale provide definitions of terms and functions of the Board of Directors, responsibilities of the Music Director, requirements for membership in the group, and direction for administration of Chorale funds.

### Membership

**Membership:** The Rogue Valley Chorale membership is by audition. Members of the group come from varied backgrounds; all have had experience singing in college, community, church or school choirs.

**Rehearsals:** The group rehearses Monday evenings. The Chorale season begins in September and runs through May. There are usually ten Monday rehearsals for each concert with an additional re-

hearsal just prior to the performance. Chorale members are expected to attend every rehearsal in order to achieve the blend, balance, and artistry necessary to present outstanding concerts. Members who must be absent are asked to notify their section leader or the Director.



*The Rogue Valley Chorale in rehearsal.*

**Performances:** At least three sets of concerts are programmed annually. In addition, special appearances are included during the year and ensembles frequently are invited to provide music for community groups.

**Leaves of Absence:** Chorale members may take a leave of absence for one concert upon written notice to the Chorale secretary. Members who are absent for a full year will be asked to reaudition. At the discretion of the Music Director, the privilege of returning to the group may also be limited for reasons of space or balance of parts.

## Programming

Programs are selected by the Music Director after consultation with the Board of Directors. Emphasis is always on large choral works, but shorter works such as light opera, Broadway musicals and folk songs may be included to add interest and balance. Special care is taken to select music of various periods and styles.

Soloists are usually selected from within the group. Occasionally the Chorale invites outstanding musicians from outside the area to perform when a particular talent is required. Instrumentalists are hired when large works require orchestral string, or other special accompaniment.



## Repertoire

The following is a partial list of extended works performed from 1973 to 1996. These works as well as many others are available for rental.

Bach, J.S.	Christ lag in Todesbanden; Jesu Mein Freude; Mass in b minor; Komm Jesu, Komm; Der Geist hilft Unser Schwachheit auf
Barber, S.	Reincarnations
Brahms, J.	Requiem; Gypsy Songs; Liebeslieder Waltzes; Motets
Britten, B.	Rejoice in the Lamb; Ceremony of Carols; Missa Brevis in D.
Bruchner, A.	Mass in E minor
Dvorak, A.	Songs of Nature
Fauré, G.	Requiem
Handel, G.F.	Judas Maccabaeus; Messiah Choruses; Coronation Anthem
Haydn, J.	Part songs; three masses
Hindemith, P.	Six Chanson; Songs on old text
Ives, C.	Easter Carol; Psalm 90; Psalm 67
Lerner and Lowe	Songs from Camelot; Brigadoon; My Fair Lady; Paint Your Wagon
Mozart, W.A.	Requiem; Solemn Vespers; Coronation Mass
Orff, C.	Carmina Burana
Poulenc, F.	Christmas Motets, Mass in G.
Respighi, O.	Laud to the Nativity
Sullivan, A.	Gondoliers; Pinafore; Trial by Jury
Thompson, R.	Peaceable Kingdom; Frostiana
Vaughan Williams	Mass in G minor
Verdi, G.	Requiem Mass

Many octavo numbers by both well-known and contemporary composers have also been performed by the Chorale. Seasonal anthems, special event music and folk songs have always been a part of the group's repertoire. In addition, special programs have been prepared for European trips.

## Chorale Finances

The Rogue Valley Chorale has been nearly self-supportive throughout the years by means of a variety of resources. The Board of Directors, together with the Music Director, determine concert budgets. Expenditures include music costs, honoraria, and production expenses such as hall rental, printing of programs and posters, pi-

ano tuning, and receptions. Honoraria are paid to the Music Director and accompanist as well as to any guest artists and orchestral musicians.

Income is realized from nominal music fees paid by members, tax deductible private donations, special performances, program advertising, and ticket sales. In 1992, the Chorale instituted a program of season-ticket sales, which, when added to regular single-concert promotions, has greatly enhanced financial stability. The Chorale now has a solid core of patrons, increasing in number each year, who are season subscribers.

Granting institutions have also been supportive of the Chorale program. In its early years the Chorale received annual grants from the Medford Junior Service League. The Chorale also was awarded a \$1000 grant by the National Endowment for the Arts for a special performance and it was the recipient of a \$500 grant from the Oregon Arts Commission. In 1980 the Carpenter Foundation funded a program for Community Outreach in the Choral Arts. This enabled the group to work with the then newly formed Klamath Symphonic Choir and also to compile a handbook as a guide for other choruses desiring organizational assistance. In 1996 the Chorale received a \$2500 matching funds grant from the Carpenter Foundation to assist in funding the presentation of *The Passion According to St. John* by J.S. Bach. A grant was also received from the Oregon Community Foundation to assist with the production of this masterwork.



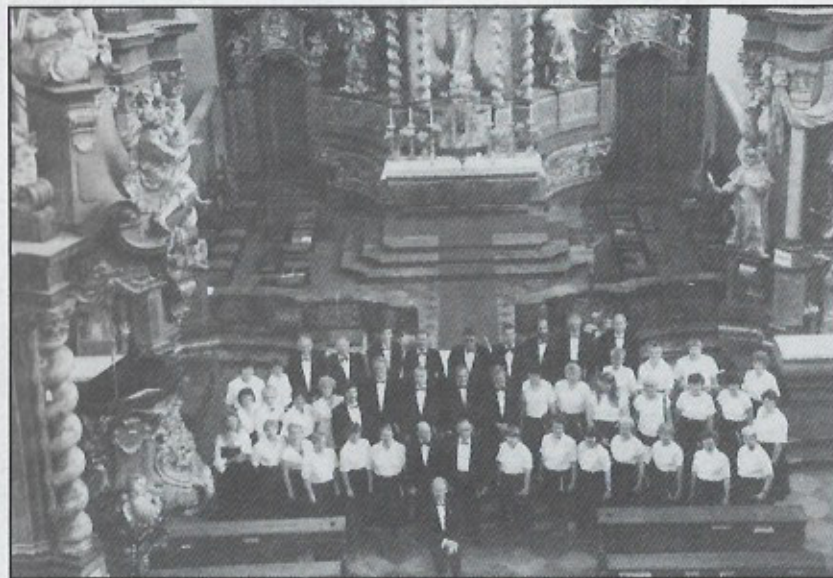
Chorale Members enjoy dinner in an Austrian Restaurant.



Doris and Lynn Sjolund aboard an excursion boat on the Vltava River, Prague.

## Special Events

In 1993, in celebration of the Chorale's twentieth anniversary, the group embarked on its first international tour. Forty-seven singers participated along with many spouses and other Chorale supporters, all of whom were responsible for their own travel expenses. The two-week tour included performances in Austria, Hungary, and the Czech Republic. In Veszprem, Hungary, the Choral was the featured American choir in the city's International Choral Festival, joining a Hungarian choir and symphony orchestra to perform Kodaly's *Te Deum*.



Rogue Valley Chorale as they appeared in St. Giles Cathedral of Prague, Czech Republic.

In the summer of 1995, fifty Chorale singers traveled to Sweden and Norway where they presented concerts in five Scandinavian cities including Stockholm, Oslo, and Bergen, and on a boat trip in the fjords. Programs included songs from those countries as well as classical sacred music and American spirituals.

Both of these trips were very successful musically and also were extremely rewarding to both individual participants and the group as a whole. As a result, the Board of Directors has decided to begin planning another tour, this one in recognition of the organization's twenty-fifth anniversary in 1998.



The logo was designed by Cleve Tooker of Commercial Printing, especially for the use of the Rogue Valley Chorale in 1975. Since then it has become a recognizable symbol for the organization.