

Cause and Effect.

Roger Stokes' cause is children. Kids Unlimited in Medford is one of the effects of his charitable fund at The Oregon Community Foundation. Like Roger, hundreds of other donors with charitable funds at OCF are improving lives in local communities all over Oregon.

You, too, can create a Charitable Fund at OCF starting with as little as \$5,000 to support the causes you care about. When it comes to your charitable goals, you don't have to be rich to be powerful.

You have the cause; we'll help you create the effect.

Call The Oregon Community Foundation Today.



Medford Office 925 W. 8th Street
Medford, OR 97501 541-773-8987

Offices in Portland, Eugene and Bend

Here for Oregon. Here for Good.

www.ocf1.org

Rogue Valley Chorale
presents

Mendelssohn's Elijah

SATURDAY, OCTOBER 27, 8PM &
SUNDAY, OCTOBER 28, 3PM, 2007

Craterian Ginger Rogers Theater



WHY

Trillium MASTERPIECE
SERIES™

Because it's the organ built for you.

Why settle for someone else's idea of the right organ for your church? A better idea just came along - yours. Trillium Masterpiece Series organs are built to fulfill your unique vision for worship.

- Unprecedented tonal design ability
- Hundreds of registration possibilities
- Customized console design, from the trim style to the toe studs
- Two to five manuals
- Each organ created individually like a fine pipe organ

The Trillium Masterpiece Series organ. It doesn't come out of a box. It comes out of your dreams.



"THE KING"
FOUR MANUAL TRILLIUM MASTERPIECE
SERIES TOURING ORGAN
WITH CUSTOM FRENCH SPECIFICATION
BUILT FOR HECTOR OLIVERA

CONTACT US FOR A MASTERPIECE SERIES BROCHURE AND CD

RODGERS
America's Most Respected Organ Builder

Stephenson and Associates - Northwest Representatives
1060 NE 25th Avenue Suite A
Hillsboro, OR 97124
503.844.7767 Toll Free 888.442.4346
www.stephensonassoc.com

Rogue Valley Chorale

THE ROGUE VALLEY CHORALE

Lynn Sjolund, Conductor

Linda Borecki, Organist & Andrea Brock, Pianist

presents

FELIX MENDELSSOHN'S

Elijah

with

Chris Thompson, Baritone, *as Elijah*

also featuring

Andrew Brock, Tenor, *as Obadiah and an Angel*

Anita Caster, Mezzo Soprano, *as an Angel*

Ellie Holt Murray, Soprano, *as the Widow*

Susan Olson White, Soprano, *as an Angel*

Barbara Kinsman, Alto, *as Queen Jezebel*

Ralph Dady, Tenor, *as Ahab*

Spencer Schmidt, Boy Soprano, *as the Youth*

Jordan Jacobs, *as the Widow's Child*

with ensembles from the Chorale

Elijah by Felix Mendelssohn (1809-1847)

Part I

Introduction: As God the Lord

Elijah

Overture

Help, Lord!
Lord, bow thine ear
Ye people, rend your hearts
If with all your hearts
Yet doth the Lord see it not
Elijah, get thee hence
For He shall give His angels charge over thee
Now Cherith's brook is dried up
What have I to do with thee, thou man of God?
Blessed are all they that fear Him
As God the Lord of Sabaoth liveth
Baal, answer us. Hear and answer us.
Call him louder!
Call him louder!
Draw near, all ye people
Cast thy burden upon the Lord
O Thou, who makest thine angels spirits
Is not His word like a fire?
Woe unto them who forsake Him!
O man of God, help thy people!
Thou hast overthrown thine enemies!
Thanks be to God!

Chorus of Israelites
The Israelite Women and Israelites
Obadiah
Obadiah
Chorus
An Angel
Semi-chorus
An Angel
A Widow, her son and Elijah
Chorus
Elijah, Ahab and Chorus
Chorus
Elijah and Chorus
Elijah and Chorus
Elijah
Chorus
Elijah and Chorus
Elijah
An Angel
Obadiah
Elijah, The Youth and Chorus
Chorus of Israelites

— Intermission —

ROGUE SCUBA Join Us for an Evening of Adventure ...
Try Scuba
In our **INDOOR HEATED POOL** \$15
call for dates & times

6022 Crater Lake Avenue
www.roguescuba.com
(541) 830-5551

 *Independent*
OBJECTIVE

MAURA VAN HEUIT, CFP
ASHLAND FINANCIAL SOLUTIONS
Fee-Only Financial Planning

- Certified Financial Planner (CFP)
- Registered Investment Advisor
- Licensed Tax Preparer

570 A STREET
ASHLAND, OR 97520
541-488-0460

Member:
National Association of Personal Financial Planners (NAPFA)
California Association of Fee-Only Advisors

WWW.ASHLANDFINANCIAL.COM

Part 2

Hear ye, Israel
Be not afraid, saith God the Lord
The Lord hath exalted thee
Woe to him
Man of God
It is enough, O Lord, now take away my life
See now, he sleepeth
Lift thine eyes
He watching over Israel
Arise, Elijah
O rest in the Lord
He that shall endure to the end
Night falleth round me
Behold, God the Lord passed by
Holy is God the Lord
Go, return upon thy way
For the mountain shall depart
Thus did Elijah the prophet break forth
Then shall the righteous shine forth
Behold, God hath sent Elijah
Thus saith the Lord, I have raised up one
O come, everyone that thirsteth
And then shall the light break forth

An Angel
Chorus of Israelites
Elijah, Queen Jezebel and Chorus
Chorus
Obadiah and Elijah
Elijah
An Angel
Israelite Women
Chorus
An Angel and Elijah
An Angel
Chorus
Elijah
Chorus
Israelite Women and Chorus
Chorus and Elijah
Elijah
Chorus
An Angel
Another Angel
Chorus
Semi-chorus
Chorus

about change . . .
Your Hair & Face Place

641 • 734-2593
E-Mail: abchange@uci.net
1-888-779-1332

16 South Central
Medford, OR 97501

JUDY CREAGER
Owner / Stylist

Go Fish!  Serving Southern Oregon
Specializing in Rogue
Summer Steelhead

Licensed
Guide Service

Steve Haskell

622 Helman Street Home Phone Cell Phone
Ashland, OR 97520 541-482-9413 541-840-6608

www.gofishguideservice.com

Mendelssohn & His Masterpiece



The story of Felix Mendelssohn is that of a Prince Charming. When he was born, amid rejoicing attending the birth of an heir to a prosperous Jewish family, he was given huge

measures of riches, charm, beauty, genius, nobility of spirit and a great capacity for hard work. His life was the happiest in music history.

violin, harmony, drawing, and languages. And in all things he did, he excelled. He made his first public appearance as the pianist in a concerto for two horns in 1818 at the age of nine. The following year he entered the Singacademie and he turned out 60 compositions before he was eleven years old.

Considered the greatest pianist in the world, Mendelssohn acquired complete mastery of composition and harmony by the time he was nineteen. Famous teachers said they had nothing more to teach him. At seventeen, Mendelssohn composed the incidental music for Shakespeare's *A Midsummer Night's Dream* — considered to be one of the most perfect pieces ever written. Many of his compositions were introduced at parties given on alternate Sundays in the Mendelssohn home. Even when he was too short to be seen without standing on

Born into a rich, cultivated family with a distinguished ancestry, his grandfather, Moses Mendelssohn was considered the modern "Plato." His father was a very successful banker and connoisseur of ideas. When little Felix' talent was recognized, his father saw to it that his life was filled with lessons of all sorts — piano,

a stool, Mendelssohn would take the baton and conduct his music. Symphonies, concerti, songs, incidental music for dramas and tone poems were turned out in great abundance.

Stories tell of Mendelssohn's having discovered the music of J. S. Bach. Though Bach had almost been forgotten, except by a few music scholars and composers, it was Mendelssohn who was determined to see that this great composer's music be heard again, and through his determined efforts the *Saint Matthew Passion* was performed and a serious revival began.

The story of *Elijah* intrigued Mendelssohn for many years, but it was not until August 26, 1846 that he experienced the crowning success of his life with its performance in Birmingham, England. In the 72 hours of rehearsal time that was allotted to him, he worked miracles. He wrote to his brother after the performance: "During the whole two hours and a half that it lasted, the two thousand people in the large hall, and the large orchestra, were all so fully intent on the one object in

question, that not the slightest sound was to be heard among the whole audience, so that I could sway at pleasure the enormous orchestra and choir and also the organ accompaniment. No work of mine ever went so admirably the first time of execution, or was received with such enthusiasm, by both the musicians and the audience as this oratorio."

After his great triumph in England, Mendelssohn returned to Liepsig exhausted. He went back to teaching at the conservatory but without his old enthusiasm and he revised parts of *Elijah*. In Spring of 1847 he returned to England to conduct command performances of symphonic works and six performances of *Elijah*.

On returning home he learned of the death of his beloved sister Fanny, who was considered a great pianist and composer in her own right. His will shattered, he continued to make plans for performances, but his health continued to deteriorate and on November 4, 1847 he died in the presence of his grief-stricken relatives and friends. He was not yet thirty nine years old.



GASTROENTEROLOGY CONSULTANTS P.C.

John A. Walker, M.D. Anthony A. Haulk, M.D., F.A.C.P.
Paul F. Schleintz, M.D. Peter W. Adesman, M.D.
Kris N. Jacobson, M.D. Gregory F. Winters, M.D.

Diplomats • American Board of Internal Medicine • American Board of Gastroenterology

Physicians Practice Limited to Gastroenterology

2860 Creekside Circle • Medford, OR 97504 • (541) 779-8367 • Fax (541) 779-7471

CRATERIAN
Performances

TEATRO LIRICO D'EUROPA
ITALIAN OPERA
Gala

Wednesday, February 13, 8pm

The world's most celebrated touring opera company comes to town for an evening of operatic magic!

sponsored by
NEWS WATCH 12

\$48, \$45, \$42, Youth (0-18) \$36, \$33, \$30
(541)779-3000 • www.craterian.org

Welcome! Enjoy the concert. The Chorale is one of the many reasons it's such a joy to own a home in Southern Oregon.

Whenever you need to market your home or look for one, please allow me the privilege of using my love for this valley and my professional knowledge of the area to your benefit.

And Thank You, Chorale, for 34 years of musical excellence. We look forward to many more!

Laura A. Horton
Broker, ABR
767 S. Riverside Ave.
Medford, OR 97501
800.782.0221
261.0204 (cell)



Rogue Valley Chorale

2007-08
SEASON

Christmas with the Chorale

Saturday, December 8, 8pm & Sunday, December 9, 3pm, 2007

BROADWAY!

Saturday, January 19, 8pm & Sunday, January 20, 3pm, 2008

THE MOST HAPPY FELLA!

Saturday, April 26, 8pm & Sunday, April 27, 3pm, 2008

Tickets may be purchased at the Craterian Ginger Rogers Theater or by calling the box office: 541.779.3000. Online & mail ordering info is available at www.craterian.org. Information regarding group pricing is available by calling the Chorale office: 541.857.8644 or via www.roguevalleychorale.org.

Pulmonary Consultants and Sleep Specialists

Pulmonary Diseases, Critical Care, Sleep Disorders, Research

555 Black Oak Drive, Suite 300
Medford, Oregon 97504
(541) 494-2000



- Personal Chef
- Custom Menus
- Family Meals
- Ready to Cook

Tracy Hurst
541-776-5392
ThymeSavorMeals.com

541-779-5175
Fax: 541-779-5585

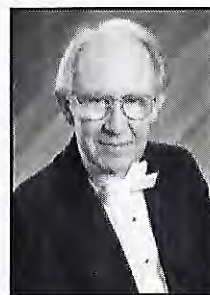
jblackhurst@kkrbg.com
www.kkrbg.com

JOHN BLACKHURST
Lawyer
KELLINGTON, KRACK, RICHMOND,
BLACKHURST & GLATTE, LLP

LAW OFFICES:
23 Newtown
Medford, OR 97501

MAILING:
P.O. Box 1583
Medford, OR 97501

Notes from the Conductor



About Tonight's Music....

Undertaking a task like "Elijah" is usually enough for any choral group. To also costume the production, light it

professionally and ask members to memorize many of the parts expands the difficulties several times.

After years of producing musicals and operas, I was convinced that I never wanted to do all those things again. But when Dr. Thompson told me of his adventure staging the work, I was convinced it could be a significant change from the usual oratorio. By projecting the characters in the drama of the life of the prophet as real people and by emphasizing their relationship to Elijah, the story would take on new meaning for the audience.

The Old Testament story of Elijah is of the straying of the Israelites from worshipping God and turning to the worship of idols. First, Elijah proves the power of God by calling on Him to save the child of the widow. Then, when the people call on their false god to bring rain after a long drought and find he does not answer, Elijah calls on the Lord to bring the rain. In the poignant scene where the youth looks for some sign of clouds, Elijah beseeches the Lord to save His people. This happens and the glorious chorus, "Thanks be to God, He revives the thirsty land," ends Part 1.

Part 2 of the story introduces new characters, including Queen Jezebel, who orders Elijah be slain. The power of God's love

saves him, and several beautiful arias and choruses triumphantly take him to heaven.

We are especially fortunate to have as a member of the Chorale, Jeannie Saint Germain. Jeannie served as chief designer for the Oregon Shakespeare Festival for many years. Her genius and hard work have transformed the look of the Chorale and given life to the characters in the drama.

We are also grateful to Dr. Thompson for his work in staging "Elijah" and singing the titanic leading role. Considered one of the great solo parts in any oratorio, it moves from one demanding aria to another. We are also fortunate to have voices like Susan White, Ellie Holt Murray, Barbara Kinsman, Ralph Dady, Anita Caster and Andrew Brock as members of the Chorale — and we would be lost without our pianist, Andrea Brock, and organist, Linda Borecki.

Finally, our appreciation goes to the Rodgers Instrument Corporation and their representatives, Stephenson & Associates, Inc., for providing the wonderful Rodgers Trillium Masterpiece T928 organ. This amazing instrument is designed to fill any accompaniment or solo needs. If you wish information about the instrument, contact the company on line. We only wish it could stay here!

It is my hope that the extra time and effort made by all the members of the Chorale will enliven our production and bring the wonderful music of Mendelssohn and the story of Elijah to you in a new way.

Lynn Sjolund

Soloists

CHRIS THOMPSON, *Baritone*



Chris Thompson is delighted to return to Medford to sing with the Rogue Valley Chorale. Previous engagements include *Elijah* and a guest appearance with the Rogue Valley Chorale and the roles of Figaro in *The Barber of Seville* and Dr. Malatesta in *Don Paquale*. Other favorite roles include: Danilo in *The Merry Widow* and Dandini in *La Cenerentola*, Falke/Frank/Eisenstein in *Die Fledermaus*, Prince Boni in *The Gypsy Princess*, Pappacoda in *A Night in Venice*, Captain in *HMS Pinafore*, and Pooh Bah in *The Mikado*.

Chris has sung opera/oratorio in regional companies throughout the United States and England, made his Off-Broadway debut as Daniel Keane in *Fermat's Last Tango* (Original Cast Recordings), and is a featured soloist on *Impetuosities* (Albany Records), a CD of music by Joshua Rosenblum,

Dr. Thompson is currently Assistant Professor of Voice at the University of Idaho where he teaches studio voice, directs/conducts the Opera/Musical Theatre Studio, and conducts for Idaho Repertory Theatre. Recent productions in Idaho include: *Oklahoma!*, *The Pirates of Penzance*, *My Way — A Musical Tribute to Frank Sinatra*, *A Chorus Line*, the northwest premiere of *Corps of Discovery* (based on the journals of Lewis and Clark), *All I Really Need to Know I Learned in Kindergarten*, and *I Love You, You're Perfect, Now Change*.

This summer Chris was musical director for Idaho Repertory Theatre and

performed in *Summer of '42* (a new musical based on the book and film) and *Much Ado About Nothing*. In August he sang Fred/Petruchio in *Kiss Me, Kate* with Coeur d'Alene Summer Theatre. In October Chris made his professional conducting debut in Lyric Opera San Diego's production of *The Man of La Mancha*.

A native Kansan, Chris received his B.M.E. from Kansas State University, an M.M. from Loyola University in New Orleans, and his D.M.A. from the University of Kansas. He did post-graduate work at the Guildhall School of Music and Drama in London.

ANDREA BROCK, *Pianist*



Andrea Brock is currently the choir director at South Medford High School, where she has been teaching since 1996. Before moving to Medford in 1996, Andrea received her Bachelor's Degree and Master's Degree in Music Education from the University of Oregon. She also attended the University of Colorado-Boulder and studied for a summer at the Musique Conservatoire de Lyon in Lyon, France. Andrea has worked with Helmuth Rilling and Anton Armstrong at the Oregon Bach Festival for 7 years and has performed numerous benefit concerts for the Doernbecker Children's Hospital with her sister, Hilary Hall, as a piano duo team. She has conducted "Crazy For You" with Rogue Music Theater and numerous other musicals at South Medford High School, and recently was musical director for Craterian Theater's production of "Songs for a New World."

Andrea has been the accompanist for the Rogue Valley Chorale for nearly 10 years, and has collaborated with many musicians in the valley. She is married to Andrew Brock, and has two lovely children, Keenan and Molly.

LINDA BORECKI, *Organist*



Linda Borecki has accompanied the Chorale in performances of Bach's *St. John Passion*, *St. Matthew Passion*, *Mass in B Minor*, and has collaborated with Andrea Brock in arranging works for the Chorale by Mozart, Haydn, and Vaughn Williams for organ and piano. She has also played organ with the Rogue Valley Symphony in Strauss' *Also sprach Zarathustra* and Holst's *The Planets*. In recital with the Southern Oregon chapter of the American Guild of Organists, she has arranged and performed Gershwin works and Andrew Lloyd Webber's *Phantom of the Opera*. Dr. Borecki's vocation is a liturgist and educator and has taught Christian liturgy and worship at seminaries in south India and Sumatra, Indonesia, and is an adjunct professor of worship with Concordia University, Portland.

ANDREW BROCK, *Tenor*



Mr. Brock's eclectic performance background and acting training has made him into a well-rounded and effective singer and actor.

Major opera roles include: Jupiter and Apollo in Handel's

Semele, Tamino in *Die Zauberflute*, Rinnuccio in *Gianni Schicchi*, Kaspar in *Amahl and the Night Visitors*, and Camille in *The Merry Widow*. Mr. Brock got his start with Eugene Opera, Obsidian Opera and the University of Oregon Opera Ensemble and currently performs with Rogue Opera, Siskiyou Singers, and the Rogue Valley Chorale.

Oratorio appearances include soloist in Haydn's *Mass in Time of War*, Respighi's *Laud to the Nativity*, Bach's *Magnificat*, Mozart's *Mass in C Minor* (conducted by Helmuth Rilling), Saint-Saens' *Christmas Oratorio*, and Handel's *Israel in Egypt*.

A full scholarship recipient, he attended the Aspen Music Festival and School in the summer of 2003. In 2007, again a scholarship winner, Mr. Brock participated in the extensive four-week vocal camp *OperaWorks* in Los Angeles. He has also received instruction from world-renowned Bach scholar and conductor Helmuth Rilling.

Mr. Brock currently teaches music at Talent Elementary School and is on faculty with the music department at Southern Oregon University. He is a graduate of the University of Oregon, where he received Master's Degrees in Music Education and Vocal Performance.

ANITA CASTER, *Mezzo Soprano*



Anita Caster has been a member of the Rogue Valley Chorale since 1990. Her most recent role was Mary in Respighi's *Laud to the Nativity*. She is a member of Southern Oregon Repertory Singers and the group,

Soloists

Six Women Who Love To Sing. She has sung with several Rogue Opera Productions.

Ms. Caster attended Southern Oregon University and holds a Bachelor's degree in Elementary Education and Music Education. She has a Master's degree in Management. She is currently a member of the administrative faculty in the School of Education at Southern Oregon University.

ELLIE HOLT-MURRAY, *Soprano*



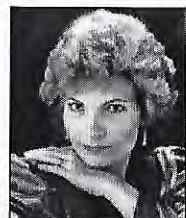
Ellie Holt-Murray, a magna cum laude graduate from San Francisco State University, was a finalist in both the San Francisco Opera's Merola Auditions and the Metropolitan Opera National Council Auditions for the San Francisco region. For ten years she sang with the San Francisco Opera's educational outreach program, *Opera a la carte*. She has performed leading roles for numerous opera companies including our own Rogue Opera in their productions of *Così fan tutte*, *Carmen*, *The Magic Flute* and for their educational outreach program as well.

Ms. Holt-Murray's concert and recital appearances have included solo performances with numerous symphony orchestras including the San Francisco Chamber Players, the Master Symphonia in Palo Alto and the Sacramento and Vallejo Symphonies. Most recently she was featured as one of the singers for the Rogue Valley Symphony's *The Three Sopranos* concert. Next spring she will sing the role of Rosabella in the Rogue Valley Chorale's production of *The Most Happy Fella*. She is also a member of the Southern Oregon Repertory Singers.

Ms. Holt-Murray is a vocal instructor

at Southern Oregon University and has a private voice studio as well. She was the Musical Vocal Coach for the Oregon Shakespeare Festival for two seasons and is co-founder of *Sing It! Say It! Dance It!*, an intensive two-week musical theater summer workshop for children.

SUSAN OLSON WHITE, *Soprano*



Susan Olson White is well known to Rogue Valley audiences, where she has been a regular soloist for Rogue Opera, Rogue Valley Symphony, Rogue Valley Chorale and the Southern Oregon Repertory Singers. A native of Utah, she resides in Ashland and serves as soloist for the Christian Science Church of Medford. Her work for Rogue Opera includes the roles of Adina in *L'Elisir d'Amore*, Micaela in *Carmen*, and Gilda in *Rigoletto*. She has also sung many roles for the Programs for Youth, including Cinderella in *La Cenerentola*, the Witch in *Hansel and Gretel*, Rosina in *The Barber of Seville* and Mimi in *La Bohème*. As soloist with the Rogue Valley Symphony, Ms. White was featured in Haydn's *The Creation* and Beethoven's *Ninth Symphony*. She has been a soloist for several years for the annual presentation of Handel's *The Messiah* and has done recital work for Friends of Music on the Oregon Coast September Music and Western Oregon University. As soloist with the Rogue Valley Chorale, Ms. White performed Bach's *St. John Passion* for the opening of the Craterian Ginger Rogers Theater and Bach's *St. Matthew Passion*.

BARBARA KINSMAN, *Alto*



Barbara Kinsman has sung with the Roger Wagner Chorale (Roger Wagner, conductor), Gregg Smith Singers, William Hall Chorale (William Hall, conductor), Master

Chorale (Jim Klein, conductor), and Masterworks Chorale (Galen Marshall, conductor.) She toured with Masterworks Chorale to China, Spain, and Eastern Europe. Barbara has sung with the Rogue Valley Chorale since 2006.

Ms. Kinsman attended UCLA and has sung in numerous church choirs. She is retired and excited to be performing in the *Elijah*.

RALPH DADY, *Tenor*



Ralph Dady attended George Fox University and played Tamino in Mozart's *Magic Flute* and McGregor in *Brigadoon*. He has sung in church choirs for most of his life and has been privileged to have numerous solos. He has been singing with the Rogue Valley Chorale for the past three years.

JEANNIE ST. GERMAINE, *Costume Designer*



Jeannie St. Germaine has sung with the Stanford University Memorial Choir and Stanford Chorale. She has been singing with the Rogue Valley

Chorale for the past seven years and the Siskiyou Singers since 1991. She also sings with St. Mark's Episcopal Church Choir.

Jeannie was the Resident Costume Designer for the Oregon Shakespeare Festival for twenty eight years. Retired now, she is responsible for the *Elijah* costumes for this performance.

SPENCER SCHMIDT, *Boy Soprano*



Spencer Schmidt is a student of Mr. Newman's 6th grade class at Abraham Lincoln Elementary. He has sung in the the Rogue Valley Children's Chorus under the direction of Gerry Flock and now is a member of the Rogue Valley Cantare Chorus under the direction of Pam Nordquist.

Community Health Center

Providing affordable health care services to those in need in our valley with locations in

Ashland, Medford, And White City

Contribute to this wonderful service by sending your donation to 19 Myrtle St., Medford, OR 97504. Your donation is tax deductible and a receipt will be sent to you for your records.

Every gift counts. Yours can count twice.

Add your support for Oregon's culture. Make a gift to any cultural nonprofit in Oregon. Then, make a matching gift to the Oregon Cultural Trust and claim a 100% tax credit. It's that simple. Learn more or donate online at www.culturaltrust.org.

Oregon Cultural Trust

775 SUMMER STREET NE, SUITE 200
SALEM, OR 97301
(503) 986-0088
CULTURAL.TRUST@STATE.OR.US

Jackson County
Community Concert Association
...since 1931 presenting superb talent to Rogue Valley Audiences...
— 2007-2008 Concert Series —

Emerald City Jazz Kings
November 2007



Angela Jia Kim, pianist
January 2008

French Chamber Orchestra
March 2008



The Celtic Tenors
April 2008

For more info: (541) 734-4116 or webpages.charter.net/communityconcerts/

I A M
INTEGRATED ASSET MANAGEMENT

Roxanne M. Kerivan
Principal

46 North Front Street, Suite 200, Medford, OR 97501
Phone 541.282.3423 • Fax 866.696.4715 • www.iamproperties.com

CHARLES R. WATSON
C.P.A.

HOOPER & WATSON, P.C.

Certified Public Accountants

850 Siskiyou Blvd., Suite 3 Ashland, OR 97520
Tel: (541) 482-0120 Fax: (541) 482-5119
chuck@hooperwatsoncpa.com

724 South Central

Newly renovated and redecorated professional office building on the Southern edge of Medford's central business district.

Suites available in a range of sizes on attractive lease terms, utilities included.

Call Roxanne Kerivan at 282-3423
www.iamproperties.com

Black Oak Pharmacy  **Shady Cove Pharmacy**
Specializing in Compounding Old-Fashioned, Personal Care
Prescriptions • Otolary • Incontinence • • • Nutritional Products • Medical Supplies

Providing Medical Equipment & Supplies for Home Health Care...
such as Lift Chairs, Walkers, Ostomy, Wound Care & much more.

Offering therapies... including Hormone Replacement, Pain Management, Veterinary Prescriptions & more.

Cards & Gifts • Postal Substation (Black Oak only)

Special products & billing services provided through both locations.

Black Oak Pharmacy 773-5356
2620-1 Barnett Rd. • Medford
www.blackoakpharmacy.com

Shady Cove Pharmacy 878-3151
21195 Hwy 62 • Shady Cove
www.shadycovepharmacy.com

HOURS:
BLACK OAK SHADY COVE
M-F 8-5 M-F 9-5
SAT 9-5 SAT 10-4
CLOSED SUNDAYS & HOLIDAYS

Chorale Members

Bass/Baritone

Bill Snook
Jeff Works

In Octet:
Phil Koenig
Rex White

Susan Ball
Mary Jo Bergstrom
Joani Bristol
Donna Daniels
Kathleen Davis*
Kristy Denman*
Charleen Fike*
Laurie Henning*
Barbara Hewitt
Carol Jacobs
Barbara Johnson
Barbara Kinsman
Andrea Levingston
Mary Lynn Lucas*
Nancy Mason*
Bonnie Miller
Cathy Morrison*
Sarah Mould
Pamela Nordquist*
Marjorie Overland
Jessica Pulido
Nancy Purdy
Sylvia Pyeatt*
Jeannie Saint Germain
Doris Sjolund*
Marj Swanson
Joan Viera*

In Octet:

Paul Hagedorn
Michael Wing

Tenor

Philip Booth
Herb Cole
Ralph Dady
Ross Davis
Ken Deveney
Terry Faulkner
Gregg Howe
Bill Matthews
Brian Nelson*
Eric Overland

Bill Snook
Jeff Works

In Octet:
Phil Koenig
Rex White

Alto

Susan Ball
Mary Jo Bergstrom
Joani Bristol
Donna Daniels
Kathleen Davis*
Kristy Denman*
Charleen Fike*
Laurie Henning*
Barbara Hewitt
Carol Jacobs
Barbara Johnson
Barbara Kinsman
Andrea Levingston
Mary Lynn Lucas*
Nancy Mason*
Bonnie Miller
Cathy Morrison*
Sarah Mould
Pamela Nordquist*
Marjorie Overland
Jessica Pulido
Nancy Purdy
Sylvia Pyeatt*
Jeannie Saint Germain
Doris Sjolund*
Marj Swanson
Joan Viera*

In Octet:

Jana Hogan
Sharon Dady

Soprano

Donna Barrett
Kristi Blackhurst
Claircy Boggess*
Dee-Marie Broyles*
Gay Cawthorne*
Diane Combs
Janet Dolan*
Karen Foster*
Beth Gibson
Kathy Gordon*
Leslie Hall*
Mary Kay Harmon
Ellie Holt-Murray
Jan Jacobs*
Terric Kirkpatrick
Julia Lester
Heather Lorenz
Alice Nykreim
Jamie Parkinson*
Marilyn Reppert
Laura Rich
Sandy Roney
Phyllis Skinner
Carol Snider*
Julie Vistaunet*
Kathy Wing

In Octet:

Carol Snider
Jacque Schmidt
Jennifer Jacobs

*denotes ensemble member

Contributors

ENDOWMENT FUND

Gifts received since inception

Mary Ann Byrne
 Bill & Charleen Fike
 Eldon & Barbara Johnson
 Peter & Julia Lester
 Robert & Judy Hanshue Lozano
 Mary Jane Morrison
 Michael & Diana Quirk
 Bryan & Jeannie Saint Germain *(in memory of David Schultz)*
 Ida Schmidt Family Trust
 Lynn & Doris Sjolund
 Mr. & Mrs. John Stewart

SEASON GIFTS

Gifts received during the 12 month period ending October 15, 2007

UNDERWRITERS

(\$1,000 & more)

Robert & Leona DeAmond
 Laurie Patterson
 Lynn & Doris Sjolund

BENEFACTOR (\$500-\$999)

Robert Begg

Bud & Mary Jo Bergstrom
 Joani Bristol
 Carroll Hauptert
 Jerry & Donnis Lausmann
 Gary & Bonnie Miller

SPONSOR (\$250-\$499)

Ascentron
 Joe & Lois Beach
 Dick & Kathy Gordon
 Don Haslett
 Eldon & Barbara Johnson
 Eric & Marjorie Overland
 Milt & Wanda Snow

DONOR (\$100-\$249)

Susan Ball
 Cindy & Steve Braden
 Dunbar & Jane Carpenter
 Dr. & Mrs. Mario Campagna
 Helen Collins
 Dr. John & Jean Conwell
 Sue Dahlke
 Don & Janet Dolan
 Bill & Charleen Fike
 John & Lynn Forsyth
 Robert & Sherrill Hays

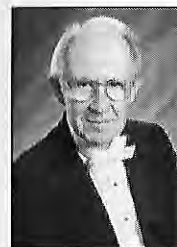
Mike & Jane Heverly
 Laurie Henning
 Jana Hogan
 Ed & Marie Houck
 Carole & Ron Holzkamp
 John Hunt
 Gary & Diane Newland
 Peter & Phoebe Noyes
 John & Kathie Ordal
 Steve & Judi Pratt
 Lynn Putnam
 Mary Ryder
 Jim & Elise Scheffel
 Dr. & Mrs. Tom Tangeman
 Tom Treger & Ruth Rabinovitch
 Darlene & David VanDenBerg
 Becky & Charlie Versteeg
 Dr. & Mrs. John Watson
 Harold & Marjorie Welch
 B. A. Whalin

FRIEND (\$50-\$99)

Ted & Jean Barss
 Vicki Bryden
 Anita Caster
 Ken Deveney
 Tim & Cathy Gerking
 Beth & Mike Gibson
 Bill & Bette Haberlach
 Roger & Faye Hutchings
 Gary & Jerrie Lovre
 Mr. & Mrs. F. Richard Middaugh
 Jay & Lucy Milojevich
 Bill & Carol Miller
 Margaret Reedy
 Laurie Rich
 Robert & Joyce Stevens
 Ralph & Nancy Willetts

Rogue Valley Chorale

ABOUT THE DIRECTOR



Lynn Sjolund is well-known as a conductor and choral clinician. He has directed festival groups and adjudicated choruses around the country. His tenure with the Chorale began

with its founding and has been continuous, with the exception of three years when he was Director of Choral Studies at Loyola University in New Orleans. He has been a regular conductor for Rogue Opera and has served as president of the Oregon Music Educators Association and the Northwest Music Educators Association.

Locally he worked on the renovation of the Craterian Ginger Rogers Theater and he currently serves on a committee for the Oregon Community Foundation. He has conducted the Chorale at New York's Carnegie Hall, and in the March of 2002 he received the "Award of Merit for a lifetime of excellence in choral music" from the Northwest American

Choral Directors Association. In October of 2002 the Arts Council of Southern Oregon presented him with its "Lifetime Achievement Award."

ABOUT THE CHORALE

In 1973, a group of 38 singers joined together to form the Rogue Valley Chorale. Now with a roster of well over 100 and an active choir of over 90, the group has continued to grow musically as well as numerically. Many of the world's great masterpieces have been sung for Southern Oregon audiences, including all of Brahms' large works, the Requiems of Verdi, Bach, Mozart, Fauré, and Duruflé. In addition, it has performed Handel's *Messiah* several times and also his outstanding oratorios *Judas Maccabeaus* and *Israel in Egypt*. The Chorale has traveled to Europe on five concert tours, most recently during July of 2006, and appeared as a featured choir in concert in New York's Carnegie Hall. The group is always looking for capable singers/musicians. Interested singers should contact the conductor or one of the Chorale members.

SOUTHERN OREGON *Repertory Singers*

"What Sweet Music" — DEC. 14 & 16, 2007
 "Mozart's Birthday Bash" — FEB. 10, 2008
 "Liquid Music" — APRIL 19 & 20, 2008
 "Songs of Shakespeare" — JULY 14, 2008

For tickets & more information:
 (541) 552-0900 • www.repsingers.org

NEW - USED GM RENTAL RETURNS

Skinner
AUTO PLEX
 BUICK • CADILLAC • PONTIAC • GM OUTLET
 COVERING 1/2 ACRES OF AUTOMOBILES
 (PHONE 708-440-0000)

BUICK Cadillac PONTIAC

Skinner Auto Plex -
 Family Owned Since 1921
 2177 South Pacific Highway • Medford
772-6264
 visit us at: www.skinnerautoplex.com

Rogue Valley Chorale

BOARD OF DIRECTORS

<i>President</i>	Rex White
<i>President Elect</i>	Robert Begg
<i>Past President</i>	Marjorie Overland
<i>Treasurer</i>	Charles Watson
<i>Recording Secretary</i>	Joani Bristol
<i>Corresponding Secretary</i>	Beth Gibson
Sylvia Bardes	Terrie Kirkpatrick
Andrea Brock	Gary Lovre
LaRea Caner	Bonnie Miller
Sue Dalke	Alice Nykreim
Barbara Dellenback	William.G. Purdy
Carroll Graber	Jeannie Saint
Mary Anne Harbison	Germain

PRODUCTION STAFF

<i>Artistic Director, Producer, Conductor</i>	Lynn Sjolund
<i>Stage Director</i>	Chris Thompson
<i>Lighting Designer</i>	Brad Nelson
<i>Costume Design, Assistant Producer</i>	Jeannie Saint Germain
<i>Cutter</i>	Elaine McBennett
<i>Seamstress</i>	Joyce Brandon
<i>Production Assistant</i>	Alice Nykreim
<i>Costume Volunteers</i>	Members of the Chorale & spouses
<i>Administrative Assistant</i>	Lindsay Darneille
<i>Accounting</i>	Barbara Johnson

ACKNOWLEDGEMENTS

Mail Tribune, Richard Moeschl, Tempo Editor
 Jefferson Public Radio
 KTVL, Channel 10, Patricia Pine, "On The Town"
 KDOV, Perry Atkinson
 Rodgers Instrument Corp., Hillsboro, Oregon
 Stephenson & Associates, Inc., Hillsboro, Oregon
 Four Seasons Nursery, Tim Elbert, Manager, for Elijah's rock
 Westminster Presbyterian Church, Organ and Piano rehearsal time
 Medford First Christian Church, Rehearsal space



Purdy Ponds
 Exotic Water Gardening
 (541) 779-3160
 email: purdyponds@aol.com
 • Consultation • Planting
 • Fertilizing • Maintenance
 • Mosquito & Raccoon Control

OILSTOP®
 DRIVE THRU OIL CHANGE
 **Chevron**

64 Lozier Lane, Medford
775 Medford Center, Medford
2210 Ashland Street, Ashland

No appointment necessary. Just drive in!

ROGUE VALLEY
Symphony
 Arthur Shaw, Music Director / Conductor

Gala 40th Anniversary Season
 2007-2008

Join us to celebrate
 the most beautiful music
 in the world!

October * November * January * March * April

Students \$5

Brochure, information, tickets **541-552-6398**
www.rvsymphony.org

