

Chorale members are required to pay membership dues each season to help defray costs of music and concert arrangements. Dues are set by the Board of Directors each fall. No member is refused admittance to the group if paying dues is a financial hardship, and exceptions are granted in this case. The Board tries to keep dues as low as possible.

Raising money can be a pleasant experience when combined with a social occasion. The Chorale has had good success giving benefit parties of many kinds, including dinners, luncheons, coffees, cocktail parties, recitals, wine and cheese-tasting parties, brunches, and card parties. These benefits are usually held in a home. A group or soloist from the Chorale always provides entertainment at these benefits, and the donation asked is set by the host or hostess.



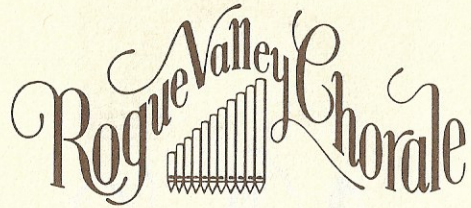
The logo was designed especially for the use of the Rogue Valley Chorale in 1975. Since then it has become a recognizable symbol for the organization.

May 1980



Founded, Spring 1973

ORGANIZATION HANDBOOK



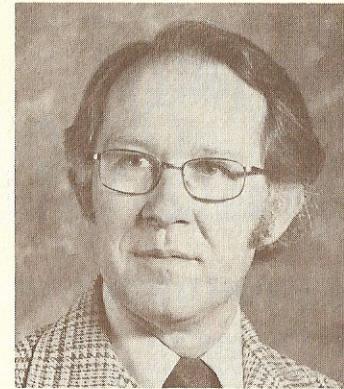
ROGUE VALLEY CHORALE ASSOCIATION

The Rogue Valley Chorale is a select adult chorus, organized to fill a musical need for performers and choral music patrons in the Rogue Valley. There are other groups in the area (both school and community) that are organized with popular or recreational music as their purpose. The Rogue Valley Chorale concentrates on music of master composers, both classical and modern.

The Chorale presents a fall program and spring program each year. The group also presents featured concerts with the Peter Britt Music Festival in Jacksonville each summer.

HISTORY

The Rogue Valley Chorale was founded in the spring of 1973 by a group of local musicians who wished to provide a forum for hearing and performing fine choral music. After several discussions concerning requirements for membership, programming, and other considerations, Lynn E. Sjolund, director of vocal music at Medford Senior High School, agreed to audition and direct the chorus. In order to provide non-profit status, the group filed articles of incorporation, with five members serving as original Directors of the Board. The incorporating members were Mary Kay Harmon, Leslie Hall, Kathryn Gordon, Karen Foster, and Judith Cushing. Assisted by Nancy Purdy and Laurie Widman, the Board members wrote the by-laws for the organization, and served with other persons on the original Chorale Association Board of Directors, who began their terms in the Fall of 1973. Auditions were held in August of that year, and the Chorale presented its' first concert on December 4, 1973, with an original membership of 45 singers. Since that time the group has expanded to approximately 80 voices, and includes singers from throughout the Rogue Valley.



LYNN E. SJOLUND

Musical Director and Conductor of the Rogue Valley Chorale since its founding in 1973, Lynn Sjolund has continuously programed challenging and vital choral music. Mr. Sjolund is chairman of the Fine Arts Department at Medford Senior High School. His music studies include degrees from the University of Oregon and further advanced work at the International Center for Music Education located in Germany.

Mr. Sjolund has served two terms as president of the Oregon Music Educators Association; served on the Jackson County Community Concert Association Board of Directors; and was a founding director of the Arts Council of Southern Oregon. He regularly directs festivals and adjudicates contests in the Northwest. In addition he is a member of the University Music Society.

Mr. Sjolund has continually sought new music and expansion of the musical repertoire of the Chorale. He has been a consistant participant in choral workshops and has been an active member of the American Choral Directors Association. As a soloist he has sung in annual "Messiah" productions and in churches and for other programs and concerts.

BY-LAWS

The by-laws of the Rogue Valley Chorale were written to provide a clear definition of terms and functions of the Board of Directors, responsibilities of the director of the Chorale, requirements for membership in the group, and direction for financial administration of Chorale funds. Copies of the by-laws are available upon request.



BOARD OF DIRECTORS

The Board of Directors manage and control the business of the Rogue Valley Chorale Association. Required to have at least ten but not more than twenty-four directors, the Board has an executive committee which includes all officers (president, vice-president, secretary, treasurer and historian) and the director of the Chorale. The Board members have various committee assignments. Standing committees are publicity, programs, tickets, concert arrangements, ways and means, and reception. A corresponding secretary is also appointed. The Board of Directors meets once a month from September through May. Each Board member serves a three year term, and annual elections for officers and new board members are held in May.

CHORALE DIRECTOR

The director-conductor of the Rogue Valley Chorale is appointed by the Board of Directors. He determines the musical program for each concert, and selects all soloists. The Director appoints an assistant director, all section leaders, and a librarian and chorale manager.

CHORALE PERSONNEL

There are appointed positions within the Chorale that are vital to the success of a large group. The assistant director conducts the Chorale in event of the absence of the Chorale director. The librarian is responsible for cataloging and sorting all Chorale music and arranging for its storage. The Chorale manager handles all physical arrangements for each concert (moving risers, piano, or other instruments, etc.). He also is in charge of concert dress for the male singers. The Chorale secretary keeps accurate membership lists and attendance records. She is also responsible for notifying Chorale members of rehearsal schedules. The secretary usually appoints a committee to help call Chorale members before each concert season. The director also appoints section leaders, who conduct sectional rehearsals and assist the director in determining specific problems within each section that might require special attention.



AUDITIONS

All members of the Rogue Valley Chorale are required to audition before the director and an audition board of the directors' choosing. Auditions are held in the Fall, and on a limited basis before the Spring Concert. No new member is added after rehearsals for the concert season begins. Requirements for membership include ability to sing in tune with a pleasant quality, experience in sight-reading music, strong interest in fine choral music, and regular attendance at rehearsals.

REHEARSALS

Rehearsals are held each week from the end of September to the end of November for the Fall concert, and from the end of January to the middle of April for the Spring Concert. Between eight and ten practices are held for each concert. No rehearsals are conducted during the busy Christmas season, during September, or near the end of school. Care is taken to consider other musical events in the community in order to avoid conflicts whenever possible. Chorale members are required to attend all rehearsals, in order to achieve the finest balance, blend, and technique possible. Members are asked to notify their section leader if they will miss a rehearsal.

PROGRAM

Programs are selected by the musical director-conductor after consultation with the Board of Directors. Emphasis is always on large choral works, but shorter works are always included to add variety and balance. Special care is taken to see that music of various periods and styles is selected. Well-arranged folk songs are usually used as special numbers and encores.

Soloists for the Rogue Valley Chorale are selected by the director. Usually they are regular members of the group, but other outstanding musicians are sometimes asked to perform as featured guests. Instrumentalists are hired when large works require orchestral, string, or special accompaniment. Occasionally the Chorale invites artists from outside the area to perform with the group when a particular talent is required or available.



REPERTOIRE

Included is a partial list of works performed since the Chorales' Premier Concert in 1973 through the summer of 1980.

Bach, J. S.	Cantata # 4, "Christ lag in Todesbanden" Cantata # 10, "Wachet auf, ruft uns die Stimme" Motet No. 3, "Jesu Meine Freude" Motet No. 5, "Komm Jesu, Komm"
Bloch, E	Sacred Service (Avodath Hakodesh)
Britten, B.	Rejoice in the Lamb Festival Te Deum Ceremony of Carols Hymn to Saint Cecelia
Haydn, J.	Heilige Messe St. Nicholas Mass Part Songs
Mozart, W. A.	Requiem Mass Regina Coeli Missa Brevis in F Vesperae Solennes de Confessore
Ives, Chas.	Psalm 90 Psalm 67 Easter Carol You Are There
Dvorak, A.	Songs of Nature
Stravinsky	Symphony of Psalms Peasant Songs
Poulenc, F.	Mass in G Christmas Motets
Schutz, H.	Magnificat
Schubert, F.	Mass in G
Vaughan Williams,	R. Mass in G (Double Chorus) Mystical Songs Lord, Thou Hast Been Our Refuge
Brahms, J.	Liebeslieder Walzer Requiem
Faure, G.	Requiem
Orff, C.	Carmina Burana



LEAVES OF ABSENCE

Upon written notice to the chorale secretary, Rogue Valley Chorale members may take leave of absence for one concert season and return for the next concert if they wish. However, any member who misses two concert seasons must re-audition before returning to the group.

CHORALE BUDGET

The Rogue Valley Chorale Board of Directors determines a budget for each concert. The current budget is approximately \$1500.00 per concert. Expenditures include music costs, honorariums, and regular concert expenses (tickets, programs, reception, publicity, piano tuning, etc.). Honorariums are paid to the Chorale director, regular accompanist, librarian, and guest artists. Orchestral musicians are paid for each rehearsal and concert attended, and out of town musicians are granted travel expenses. Receipts are from Chorale dues, ticket sales, donations, benefits and grants.

FUNDING

The Rogue Valley Chorale has been nearly self-supportive through dues, ticket sales, benefits and private donations. However, the Medford Junior Service League has given a grant to the Chorale each year since 1976. The Chorale also received a \$500.00 grant from the Oregon Arts Commission in 1975. In 1980 the Chorale has received a \$650.00 grant from the Carpenter Foundation for a Community Outreach in the Choral Arts program, designed to promote formation of choral groups in other Southern Oregon and Northern California communities. The grant assisted the Chorale with a trip to Klamath Falls to perform a joint concert with the newly formed Klamath Symphonic Choir, and the printing of this handbook as a guide for other groups desiring help with chorus organization.

Ticket sales are very important to the success of the group. Chorale members are urged to be their own best promotor, and sell as many tickets as they can.